



Instruction Manual

# **LAN Hub Controller**

## **Model R190**

Monroe Electronics  
100 Housel Ave  
Lyndonville NY 14098-0535  
800-821-6001 | 585-765-2254 | fax 585-765-9330  
[www.monroe-electronics.com](http://www.monroe-electronics.com)  
1340215  
063006

## **Table of Contents**

Warranty	3
Specifications	4
Front and Rear View	5
General Overview	6
Getting Started	7-11
Operation	12-13
Wiring Diagrams	14

## **Warranty**

Monroe Electronics, Inc. warrants to the owners, each instrument and sub-assembly manufactured by them to be free from defects in material and workmanship for a period of two years after shipment from factory. This warranty is applicable to the original purchaser only.

Liability under this warranty is limited to service, adjustment or replacement of defective parts (other than fuses and batteries) on any instrument or sub-assembly returned to the factory for this purpose, transportation charges prepaid.

This warranty does not apply to instruments or sub-assemblies subjected to abuse, abnormal operating conditions, or unauthorized repair or modification.

Since Monroe Electronics, Inc. has no control over conditions of use, no warranty is made, or implied as to the suitability of our product for the customer's intended use.

THE WARRANTY SET FORTH IN THIS ARTICLE IS EXCLUSIVE AND IN LIEU OF ALL OTHER WARRANTIES AND REPRESENTATIONS, EXPRESS, IMPLIED OR STATUTORY INCLUDING, BUT NOT LIMITED TO THE IMPLIED WARRANTIES OF MERCHANTABILITY AND FITNESS. Except for obligations expressly undertaken by Monroe Electronics, in this warranty, Owner hereby waives and releases all rights, claims and remedies with respect to any and all warranties, express, implied or statutory (including without limitation, the implied warranties of merchantability and fitness), and including but without being limited to any obligation of Monroe Electronics with respect to incidental or consequential damages, or damages for loss of use. No agreement or understanding varying or extending the warranty will be binding upon Monroe Electronics unless in writing signed by a duly authorized representative of Monroe Electronics.

In the event of a breach of the foregoing warranty, the liability of Monroe Electronics shall be limited to repairing or replacing the non-conforming goods and/or defective work, and in accordance with the foregoing, Monroe Electronics shall not be liable for any other damages, either direct or consequential.

## **Return Policy to Factory**

Materials returned to Monroe Electronics must have a Return Material Authorization number. To obtain a RMA number, contact our A/V Switching & Control Customer Service at 585-765-2254 or fax 585-765-9330. Customers have 30 days to determine that the product ordered fills their need and performs as described in Monroe's literature. Units returned for approved repair or credit, must be in the original packaging including all parts and paperwork plus be in very good physical condition. If not, the customer is billed the cost to refurbish the unit and for missing accessories and merchandise. No products may be returned for exchange or credit after 12 months of the shipment date. Monroe reserves the right to repair or replace units under warranty.

# Specifications

**Number of relays**

4 Individually controlled rated for 1Amp at 30 Volts DC

**Connections**

10/100 baseT via RJ45

**Power requirements**

+ 5 volts DC; 94-240 VAC wall unit supplied

**Indicator lights**

One (1) to indicate Power on the front panel

Four (4) to indicate Power, Connectivity, Activity and I/O on the rear panel

**Equipment Supplied**

Power Supply

8 position plug

CD with setup program and instruction manual

## Front View



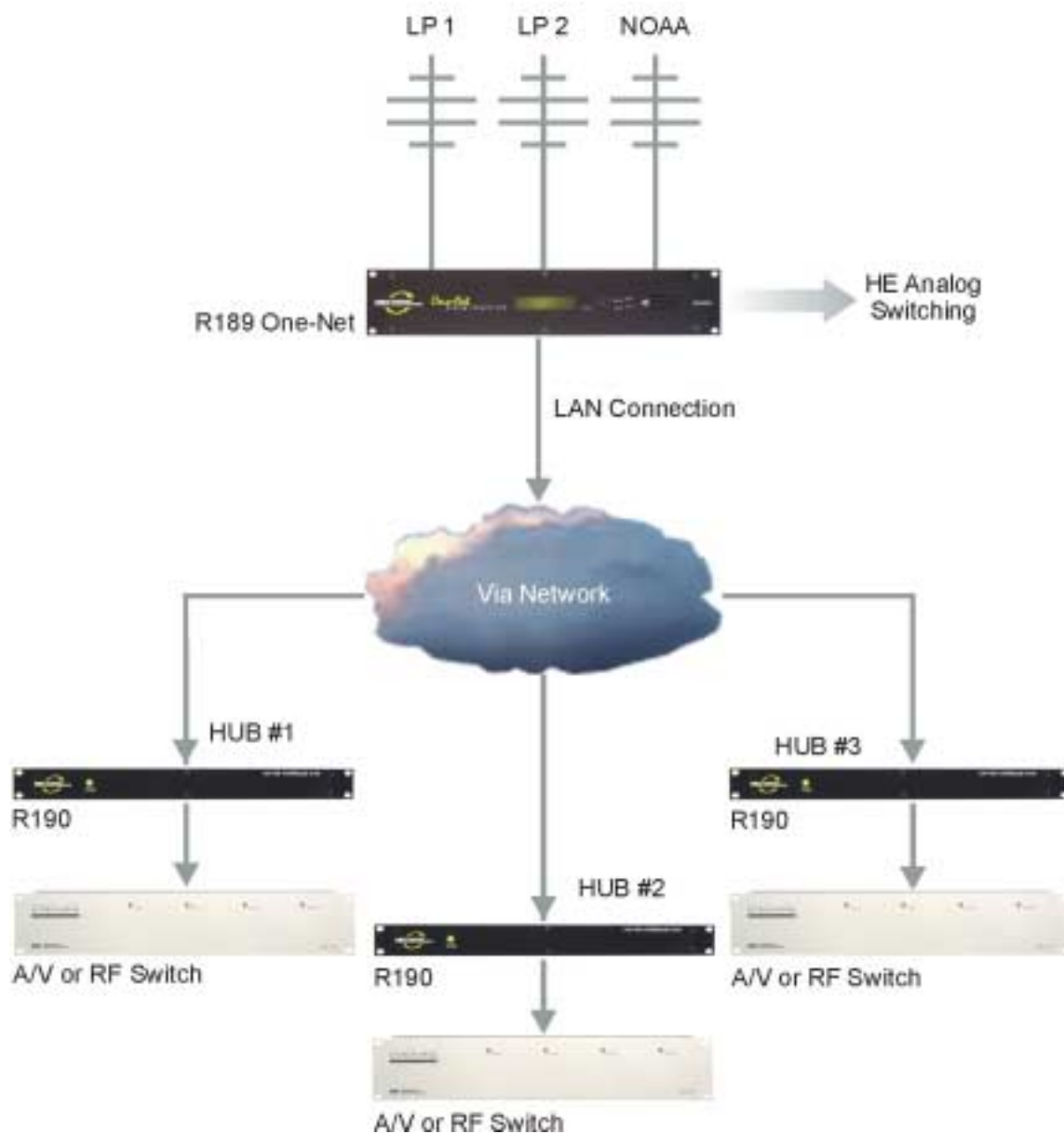
## Rear View



## General Overview

The R190 Hub Controller provides the ability to switch equipment at a remote site or CATV Hub during EAS Alerts. It uses a LAN or WAN connection from a control device such as the R189 One-Net EAS Encoder/Decoder. The unit has 4 relays that are individually addressable. When used with the One-Net, they may be triggered based on FIPS codes.

### Typical R190 Application



## Getting Started

**Setting the IP address** – The R190 comes with a default IP address of 192.168.1.123. One of the following methods can be used to access the device:

### **Directly connecting a networked host computer**

Connect a CAT-5 network crossover cable to the RJ45 port at the back of the R190 and to the RJ45 port of the network interface card (NIC) of a standalone PC or notebook computer. Configure the standalone PC to use the static IP address 192.168.1.124 with a net mask of 255.255.0.0. After the R190 powers up it can be accessed via a Web browser on the host computer.

Launch a Web browser application and direct the URL to <http://192.168.1.123/>. The R190 will provide a gateway page and quickly redirect to the R190 Home page.

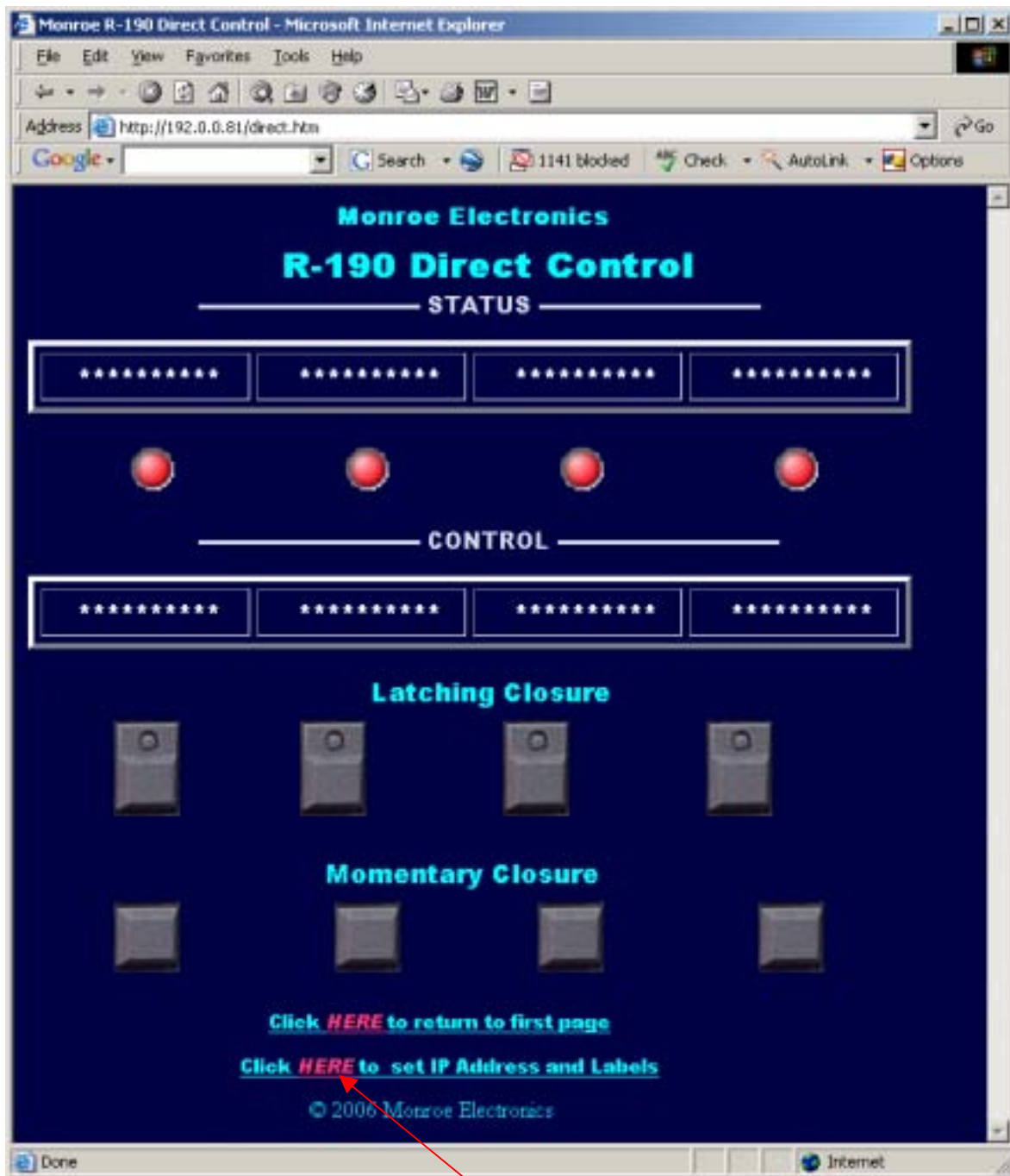
### **LAN connection with a networked host computer**

Connect a standard CAT-5 network cable from the RJ45 port at the back of the R190 into a routing hub or other network-switching device. You will likely need assistance from a network administrator to insure the One-Net's default network address of 192.168.1.123 will be visible on the network, or will not clash with an existing node. Once the R190 is powered up it can be accessed via a Web browser from any remote computer on the LAN routed to see the address 192.168.1.123.

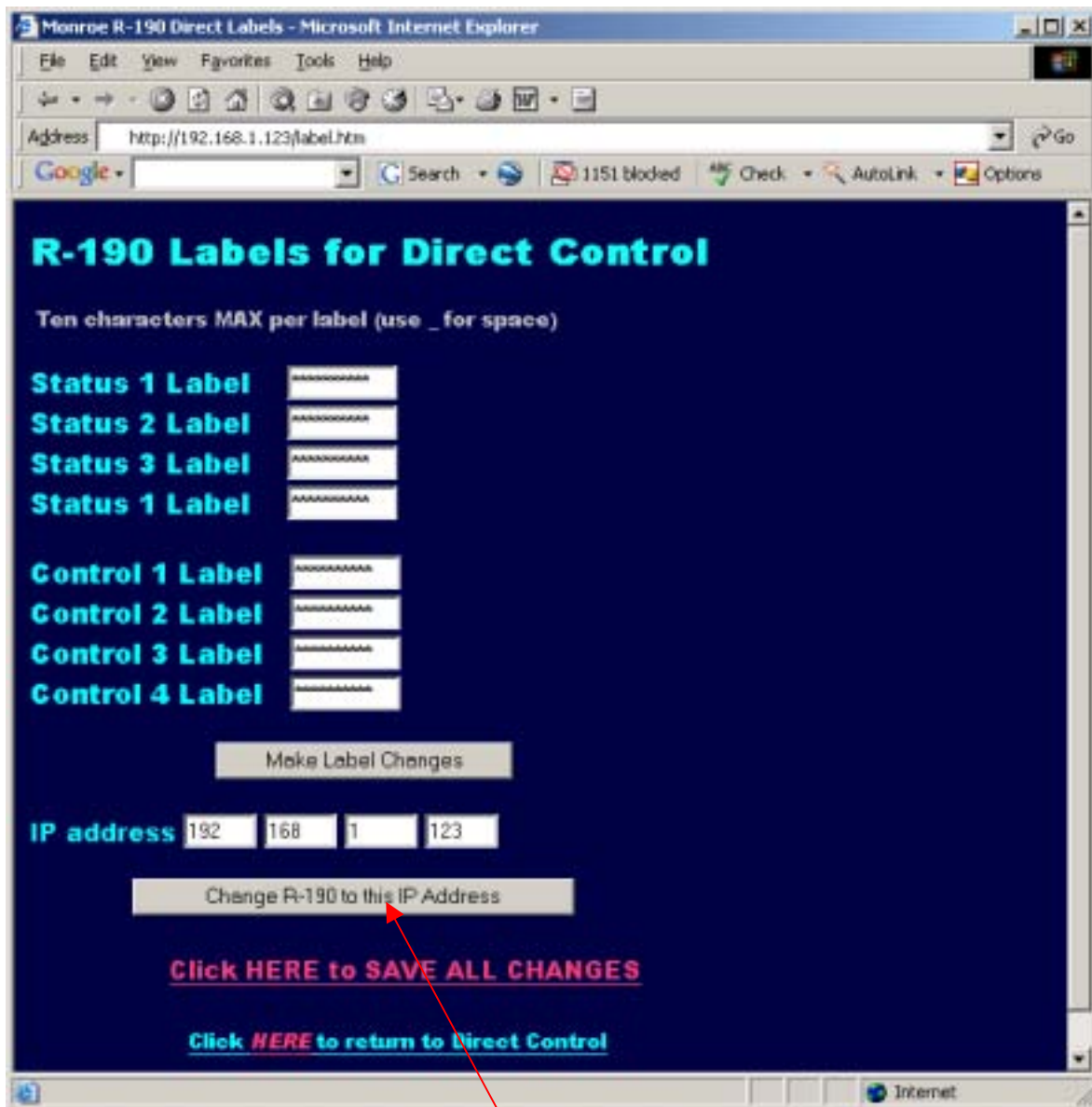
WHEN A SUCCESSFUL CONNECTION IS ESTABLISHED TO THE R190 THE FOLLOWING SCREEN WILL BE DISPLAYED THROUGH THE BROWSER:



Click on the red "HERE" for the direct relay control and the following screen will be displayed.



To edit the IP address, click on the red "HERE" and the following screen will be displayed:



**Changing the IP address** – Type the new IP address into the boxes following “IP address” shown above. To upload the address into the R190 click on “Change R-190 to this IP address”. The unit will be updated to the new address. You will no longer be able to communicate with the unit with the old address. Change the address in your browser to the new address and reconnect to the unit.

**Note:** The new address has been entered into the unit but is not yet stored into permanent memory. If a mistake in entering the address has been made, you can cycle the power to the unit and it will return to the previous setting.

**Permanent storage of IP change** – After a connection has been reestablished with the unit, using the new address, the following screen will be displayed.

Monroe R-190 Direct Labels - Microsoft Internet Explorer

File Edit View Favorites Tools Help

Address <http://192.0.0.81/label.htm> Go

Google Search 1141 blocked Check AutoLink Options

## R-190 Labels for Direct Control

Ten characters MAX per label (use \_ for space)

Status 1 Label

Status 2 Label

Status 3 Label

Status 1 Label

Control 1 Label

Control 2 Label

Control 3 Label

Control 4 Label

Make Label Changes

IP address

Change R-190 to this IP Address

[Click HERE to SAVE ALL CHANGES](#)

[Click HERE to return to Direct Control](#)

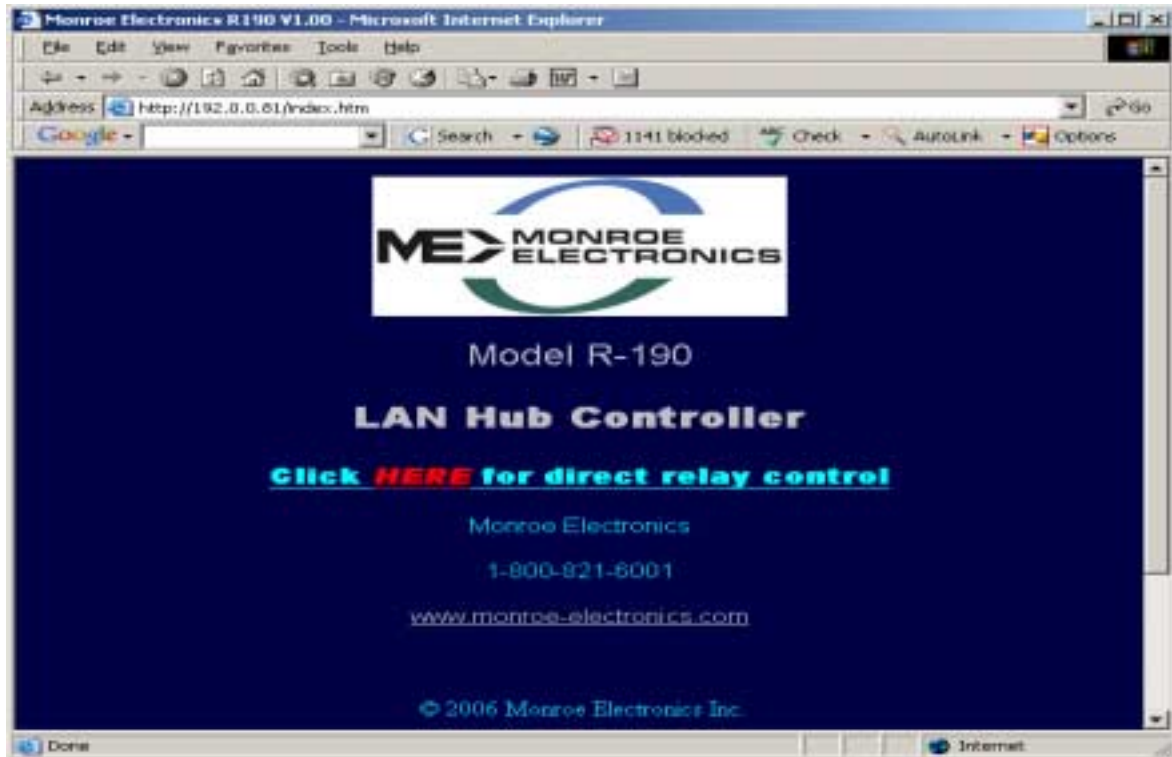
Internet

Click on “Click HERE to SAVE ALL CHANGES” to STORE THE ADDRESS PERMANENTLY.

**NOTE:** It is not necessary to program anything in the Status and Control label boxes.

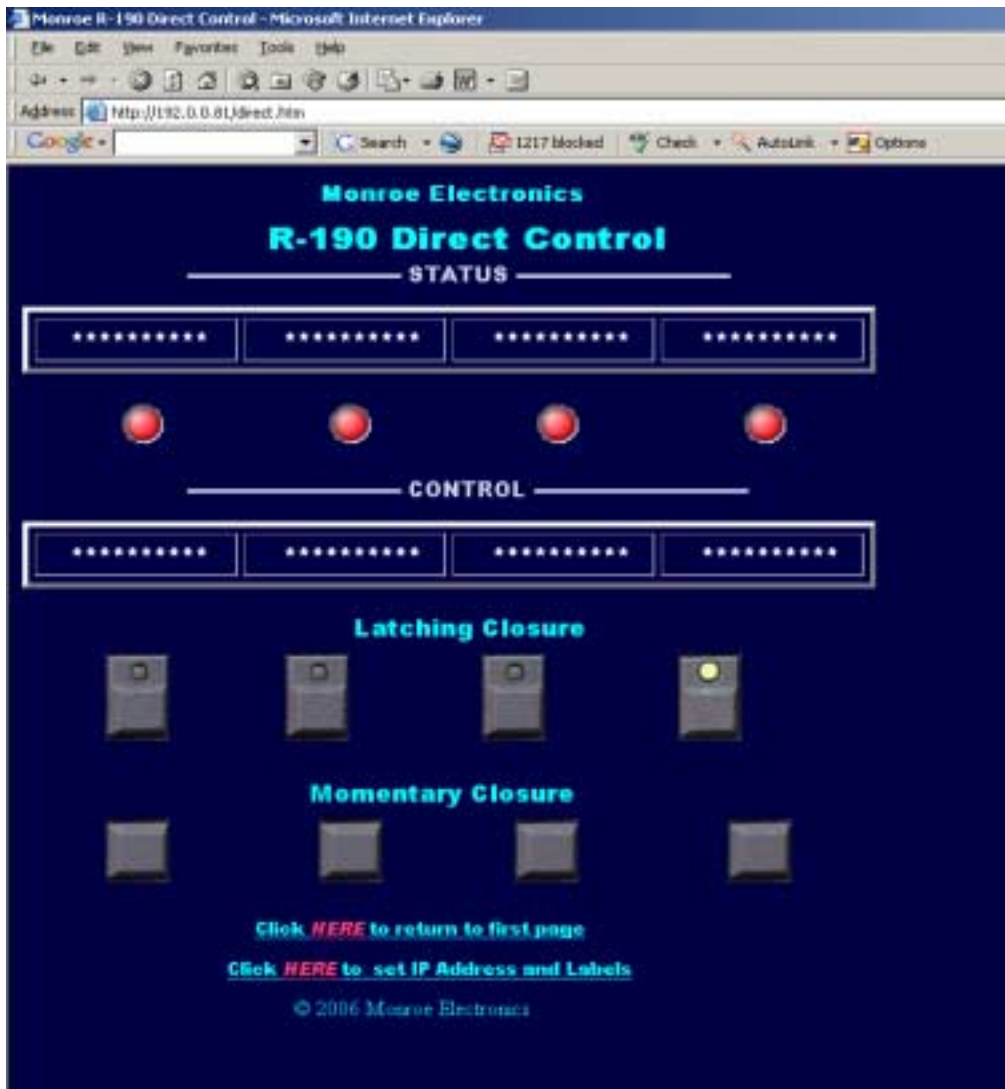
## Operation

Testing the unit can be done by accessing the unit in the same manner it was programmed. Enter the units IP address into your browser and the following display will be shown.



The next step is to click on the red “HERE” for the direct relay control and the following screen will be displayed.

By clicking on the button under either the Latching Closure or the Momentary Closure you will be able to activate each relay for testing. If you have chosen one of the latching buttons a light will illuminate on the button indicating the relay is closed.



To configure your R189 One-Net EAS Encoder/Decoder to talk the R190, refer to section 5.10 of the R189 Manual for programming instructions.

## Typical R190 Wiring Diagram

